



Cygnus

MPP Singledecker, box with 2 bulkheads

General information

Built	2000
Imo	9197428
Flag	Portugal
Port of registry	Madeira
Call sign	CQQH
Dwat (summer)	3380 mt
Draft	5.55 mtr
Gt / nt	2528 / 1372
Loa	86.57 mtr
Beam	12.80 mtr
Class	RINA
Main engine	SKL 2100 kW / 2816 HP
Aux engine	MTU 2 engines
Bow thruster	220 kW / 295 HP
Speed/consumption	abt 11 knots on abt 5.7 ton MGO

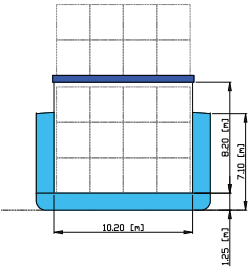
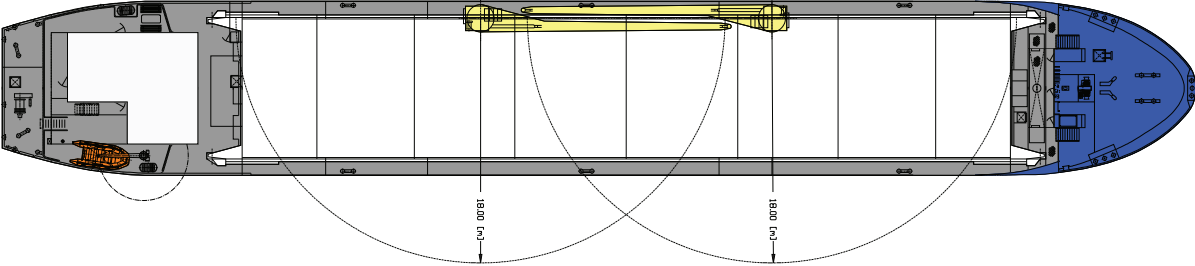
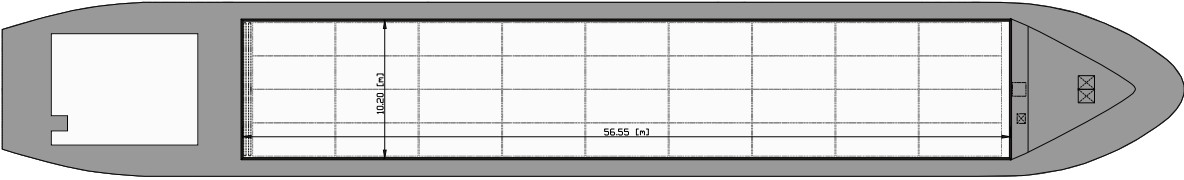
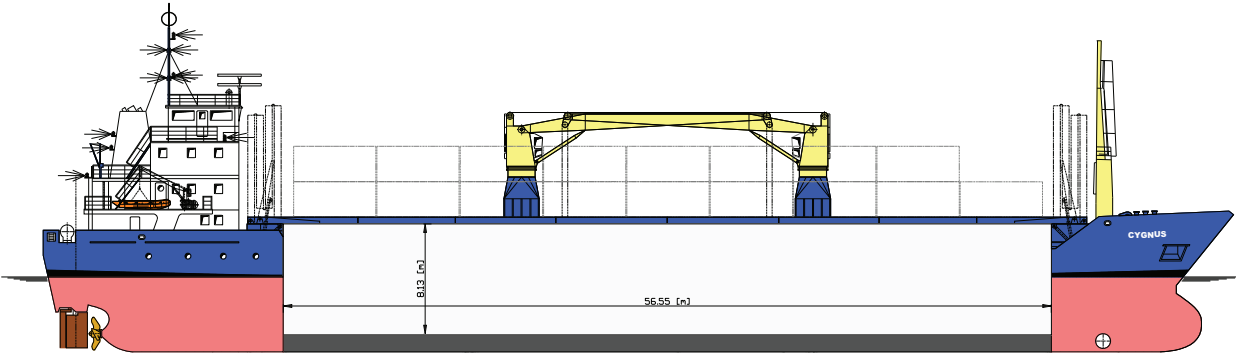
Loading capacities

No. of holds/hatches	1 box double skinned hold / 1 hatch
Holdsize	56.55 x 10.20 x 8.13 mtr
Hatch size	56.55 x 10.20 mtr
Hatchcover type	hydraulic folding type
Hatchcover strength	1.6 mt / m ²
Tanktop strength	20 mt / m ²
Hold ventilation	electrical six-fold per hour
Container capacity	164 TEU whereof 108 TEU in hold 56 TEU on deck
Grain / bale capacity	163,000 cbft
Grain fitted	Yes
Cargo gear	2 cranes of 30 tons each

All details believed to be correct, given in good faith, without guarantee and subject to reconfirmation

bluemarlin.net

Technical drawing Cygnus



All details believed to be correct, given in good faith, without guarantee and subject to reconfirmation