



Michael A

MPP Singledecker, box with 2 bulkheads

General information

Built	1994
Imo	9056076
Flag	Antigua & Barbuda
Port of registry	St John's
Call sign	V2KX
Dwat (summer)	3631 mt
Draft	5.59 mtr
Gt / nt	2506 / 1351
Loa	87.68 mtr
Beam	12.90 mtr
Class	DNV GL
Main engine	MAN 1470 / kW 1970 HP
Aux engine	MAN 2 engines
Bow thruster	185 kW / 250 HP
Speed/consumption	abt 10 knots on abt 5.7 ton MGO

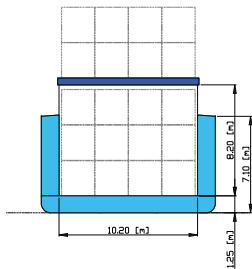
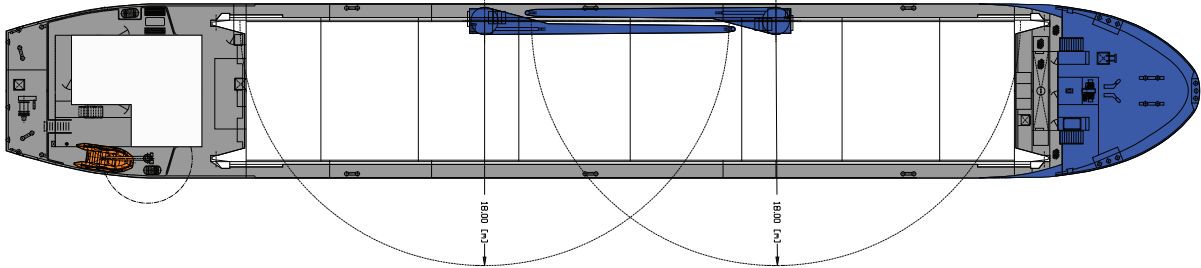
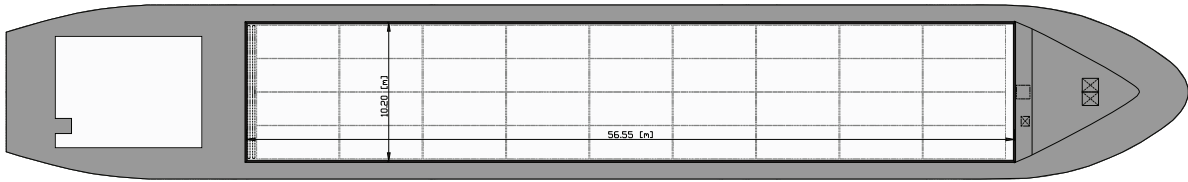
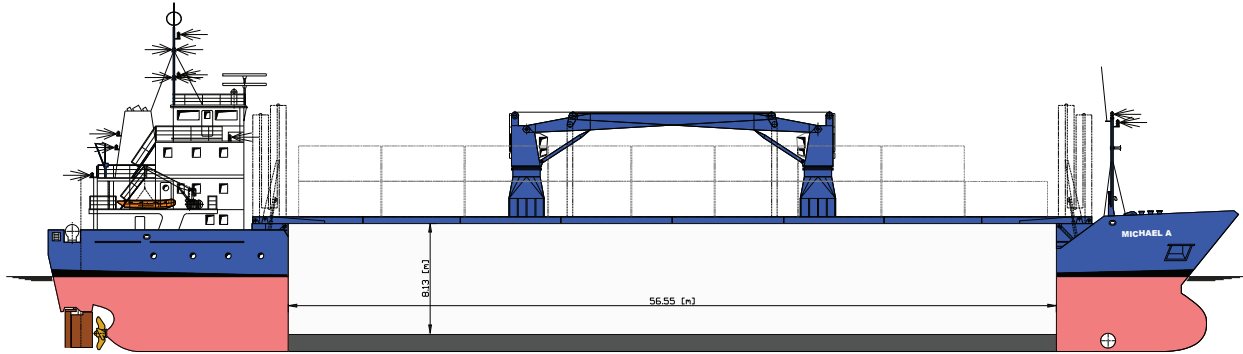
Loading capacities

No. of holds/hatches	1 box double skinned hold / 1 hatch
Holdsize	56.55 x 10.20 x 8.13 mtr
Hatch size	56.55 x 10.20 mtr
Hatchcover type	hydraulic folding type
Hatchcover strength	1.6 mt / m ²
Tanktop strength	20 mt / m ²
Hold ventilation	electrical six-fold per hour
Container capacity	164 TEU whereof 108 TEU in hold 56 TEU on deck
Grain / bale capacity	163,000 cbft
Grain fitted	Yes
Cargo gear	2 cranes of 12.5 tons each

All details believed to be correct, given in good faith, without guarantee and subject to reconfirmation

bluemarlin.net

Technical drawing Michael A



All details believed to be correct, given in good faith, without guarantee and subject to reconfirmation